

# PROLINE PLUS<sup>®</sup> Reverse Osmosis Drinking Water System



# Enjoy

**Pure and Healthy Water for Drinking, Cooking, Ice Making, Coffee & Tea, Food Processing, Pets & Plants...**

**... At Homes, Offices, Schools, Restaurants, & Laboratories.**

***For Every Day Life!***



Certified by IAPMO R&T against NSF/ANSI 58 for TDS Reduction claim.

## How is water contaminated?

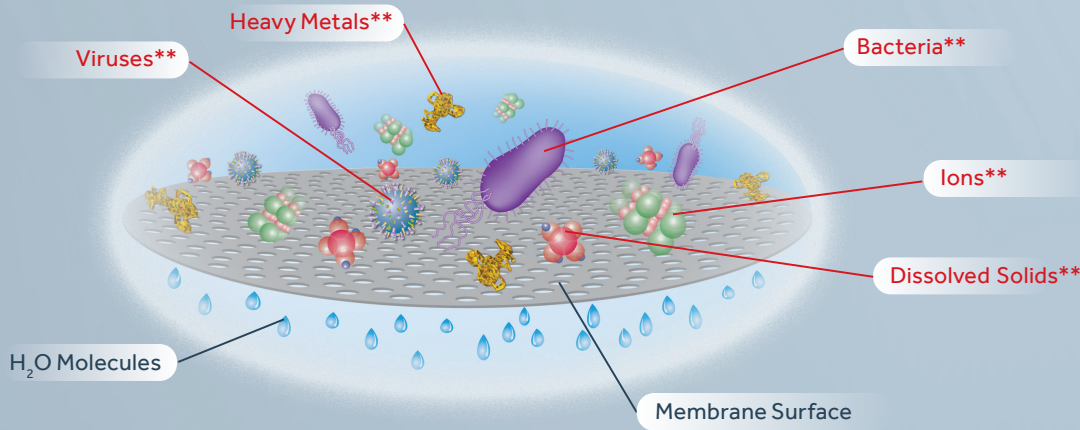
Being the world's universal solvent, water constantly dissolves and absorbs contaminants while traveling miles from its source to you.

Contaminants such as heavy metals, salts, dissolved solids, bacteria, and sometimes viruses may find their way in to your water supply.



## How does reverse osmosis work?

With the **PROLINE PLUS**® purification technology and breakthrough engineering, it is the finest level of filtration available.



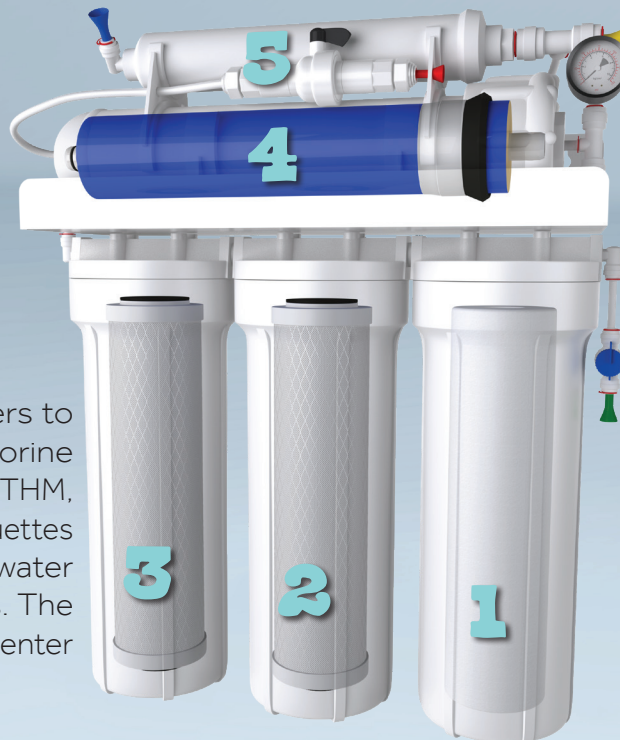
FYI: Beach sand is about 50 Microns

Water pressure forces smaller H<sub>2</sub>O molecules through very tiny semi-permeable membrane pores, which measure 0.0001 microns. This acts as a barrier to contaminants, which are rejected by the membrane and flushed down the drain.

## The Pure Water Machine, incorporates a Complete 5-stage water treatment & purification system:

### Stage 1

5 Micron polypropylene sediment pre-filter to extract suspended materials such as sediments, rust, insects, and other particles down to 5 micron.



### Stage 4

High rejection (95-99%) NSF Thin Film Composite RO membrane 50 GPD to reject a wide spectrum of impurities including Total Dissolved Solids (TDS), heavy metals, bacteria, & viruses.

### Stages 2 & 3

Double NSF carbon block filters to absorb heavy chlorine and chlorine by-products such as chloramine, THM, and TCE. The double carbon briquettes filter out organic matter from water without release of carbon fines. The carbon block prepares water to enter the reverse osmosis element.

### Stage 5

In-line NSF Coconut Shell GAC filter is used to remove dissolved gases, bad taste and odor from product water. This is the polishing stage before consumption.

**\*\*CONTAMINANT REDUCTION CAPABILITIES** Please note that the contaminants listed are not necessarily in your water. It is recommended that before purchasing a water treatment unit, the water supply is tested to determine actual water treatment needs.



**Dependable**

**Convenient**

**On the Go!**

**Save time and Money!**

Instead of wasting time and money on buying and carrying safe drinking water, invest in your own pure water machine. The crisp taste of pure water from your **Proline** drinking water system is very economical and costs pennies per gallon.



**Pure & healthy**

**Connect to ice-maker for clear ice cubes.**



**At your fingertips, always pure and always fresh.**

## **PROLINE PLUS®**

**The Pure Water Machine is Reliable!**

- Years of trouble free operations.
- Consistent pure water supply.
- Heavy duty construction.
- All 5 stages have gone through rigorous testing and validation/certification by well recognized 3rd party agencies.
- Exceeding industry standards in performance.
- Backed by our exclusive 5-year limited warranty.



Certified by IAPMO R&T against NSF/ANSI 58 for TDS Reduction claim.



# Standard Features for PROLINE PLUS® System

- NSF listed 4 gallon United Tanks™ storage tank with
- Stainless steel port & original JG heavy duty ball valve
- JG Quick connect NSF fittings featuring ProLock™
- With manual flush to remove Carbon fines at time of installation
- Attractive euro-soft extra tall faucet
- Automatic shut-off valve (when tank is full)
- Built-in pressure gauge for performance monitoring
- Color coded JG tubing for easier installation
- Inlet feed JG ball valve for easier maintenance
- Complete installation kit and instructions manual
- Backed by our exclusive 5-year limited warranty
- Made of high quality certified & listed parts and components

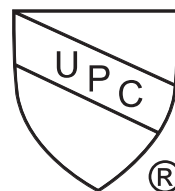


## Options for PROLINE PLUS® Systems

1. In-line UV lamp, 1.0-2.0 GPM
2. Plastic storage tank, 4 gallon
3. Air-gap, colored faucets, or designer faucets\*
4. Additional stages such as DI, KDF, and or mineral cartridges
5. TDS monitor
6. 14 Gallon storage tank
7. Aquatec permeate pump
8. Delivery pump
9. 75 Or 100 GPD membrane
10. Private labeling (your brand will be NSF/ANSI 58 for TDS rejection)

**CONSULT OUR SALES DEPARTMENT FOR MORE INFORMATION**

Distributed By



Certified by IAPMO R&T against NSF/ANSI 58 for TDS Reduction claim.

